

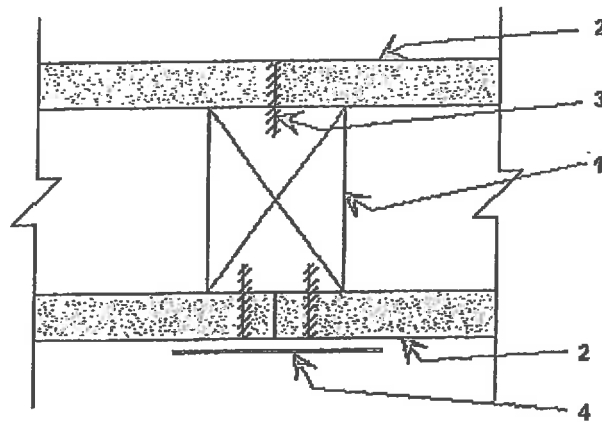
WALL ASSEMBLIES

EZ TAPING SYSTEM, INC. - Green Bay, WI USA

▷ DESIGN NO. EZT/WA 60-01

▽ DESIGN NO. EZT/WA 60-02

**DESIGN NO. EZT/WA 60-02
ASSEMBLY RATING - 1 HOUR, BEARING WALL**



1.	Studs: Nominal 2" x 4" wood studs, spaced maximum 16" o.c. with mid-height bridging.
2.	Gypsum Board: 5/8" thick USG Sheetrock brand gypsum panels, "Firecode Core" (Type SCX), or Canadian Gypsum Co. 5/8" Type SCX Firecode Core, applied vertically. No horizontal joints allowed. All joints are staggered and tightly butted. If joints are not tightly butted, finishing coat of joint compound applied over EZ Taping System, Inc. "Fire Tape" is required.
3.	Attachments: a) 1-1/4" long, Type W drywall screws, spaced 8" o.c. to vertical edges and 12" o.c. to top and bottom runners and intermediate studs. b) 1-7/8" long, 0.0915" Shank, 1/4" Head, nailed at 7" o.c.
4.	"Fire Tape": Nominal 2" (48mm) wide EZ Taping System, Inc. Fire Tape applied on the vertical joints at stud. Finishing coat of joint compound applied over EZ Taping System Inc. Fire Tape is required.

*Component bearing the Warnock Hersey Certification Mark
Testing Standards: CAN/ULC-S101, NFPA-251, UL-263.

▷ DESIGN NO. EZT/WA 120-01

▷ DESIGN NO. EZT/WA 120-02

▷ Evaluated to the following...