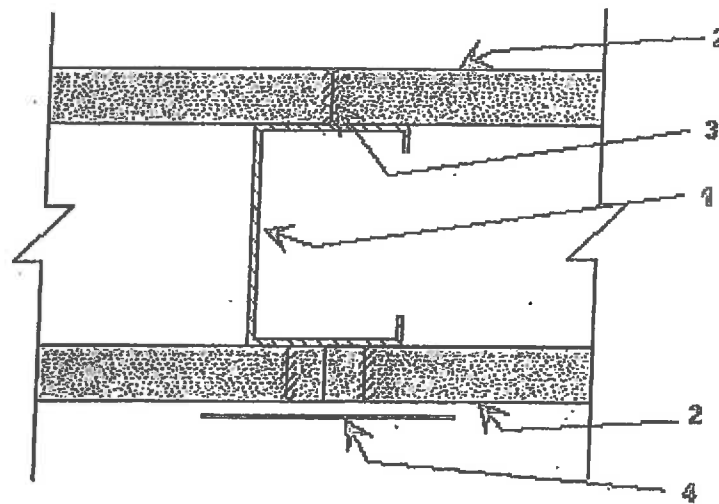


## WALL ASSEMBLIES

EZ TAPING SYSTEM, INC. - Green Bay, WI USA

▽ DESIGN NO. EZT/WA 60-01

**DESIGN NO. EZT/WA 60-01  
ASSEMBLY RATING - 1 HOUR, NON-BEARING WALL**



1. **Steel Studs:** 'C' shaped 3-5/8" minimum deep, fabricated from minimum 0.019" thick galvanized steel. Cut to length 1/2" less than the openings height and spaced 24" maximum oc.
2. **Gypsum Board:** 5/8" thick USG Sheetrock brand gypsum panels, "Firecode Core" (Type SCX), or Canadian Gypsum Co. 5/8" Type SCX Firecode Core; applied vertically. No horizontal joints allowed. All joints are staggered and tightly butted. If joints are not tightly butted, finishing coat of joint compound applied over EZ Taping System, Inc. "Fire Tape" is required.
3. **Attachment:** 1-1/8" long, Type S drywall screws, spaced 8" o.c. to vertical edges and 12" o.c. to top and bottom runners and intermediate studs.
4. **"Fire Tape":** Nominal 2" (48mm) wide EZ Taping System, Inc. Fire Tape applied on the vertical joints at stud.

\*Component bearing the Warnock Hersey Certification Mark

Testing Standards: CAN/ULC-S101, NFPA-251, UL-263.

▷ DESIGN NO. EZT/WA 60-02